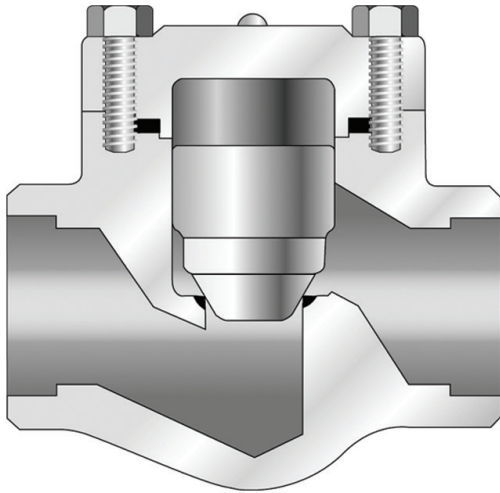
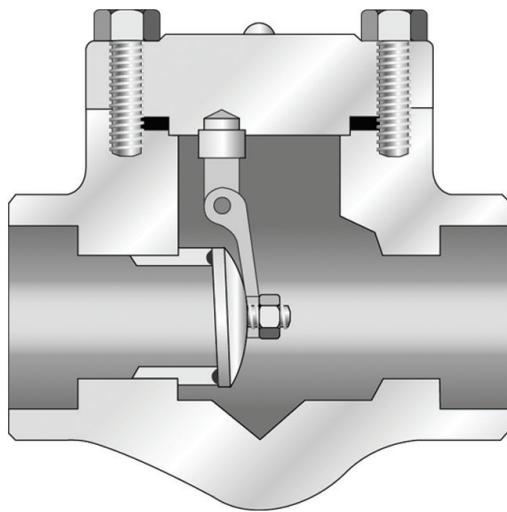


LIFT CHECK VALVE



LIFT CHECK



SWING CHECK

LIFT CHECK VALVE DESCRIPTION

They have an advantage over most other types of check valve in that they need only a relatively short lift to obtain full valve opening. The lift check valve uses a free-moving closure element that is placed above the seat. It prevents backflow and maintains pressure. The lift check valve is recommended to install in horizontal piping lines because the disc is pushed up by the flow until the flow reverses when gravity and down stream pressure close the closure element against the seat.

CLASS

API 800, 1500

ANSI 150, 300, 600, 900, 1500, 2500, 4500

SIZE

3/8", 1/2", 3/4", 1", 1 1/4", 1 1/2", 2"

MATERIAL

ASTM A105, A182-F5, A182-F9, A182-F11, A182-F22, A182-F304, A182-F316, A182-F304L, A182-F316L, A350-LF2

END CONNECTION

SOCKET WELDING, THREADED

BUTT WELDING, FLANGED

FEATURE

BOLTED COVER OR WELDED COVER

INTEGRAL SEAT

SWING CHECK VALVE DESCRIPTION

prevent reversal of flow through pipe lines. The swing check valve uses a hinged door to open during flow and to close against a pressure reversal. Swing check valve can be installed in horizontal or vertical upward flow piping. They offer low resistance to flow and are particularly suited to low velocity service

CLASS

API 800, 1500

ANSI 150, 300, 600, 900, 1500

SIZE

3/8", 1/2", 3/4", 1", 1 1/4", 1 1/2", 2"

MATERIAL

ASTM A105, A182-F5, A182-F9, A182-F11, A182-F22, A182-F304, A182-F316, A182-F304L, A182-F316L, A182-F321, A182-F347, A182-F51, A182-F91, A350-LF2

Other Materials also Available on Application

END CONNECTION

Socket welding, threaded

Butt welding, flanged

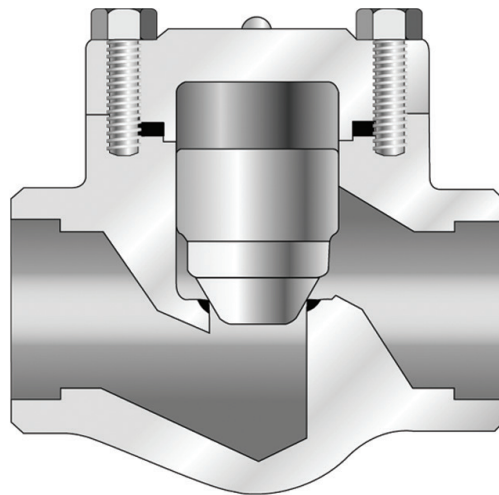
FEATURE

Bolted cover or welded cover

Renewable seat

LIFT CHECK VALVE

BOLTED COVER



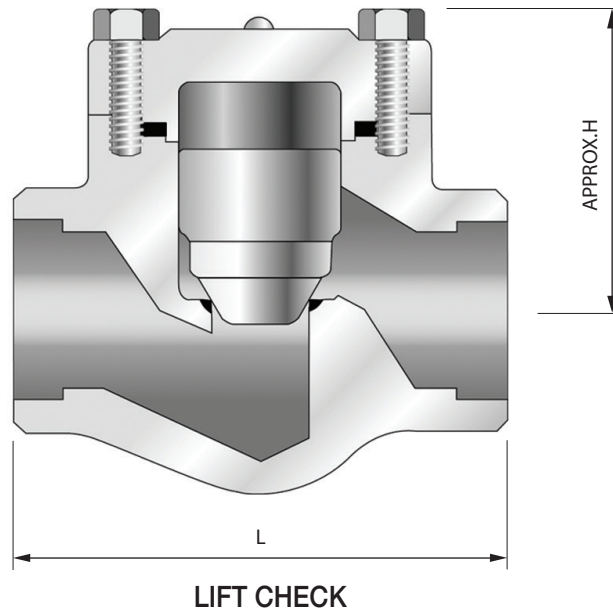
LIFT CHECK

STANDARD MATERIAL SPECIFICATIONS

NO.	PART NAME	Q'TY	MATERIAL-ASTM				
			A105	F304	F304L	F316	F316L
1	Body	1	A105	A182-F304	A182-F304L	A182-F316	A182-F316L
3	Cover	1	A105	A182-F304	A182-F304L	A182-F316	A182-F316L
5	Disc	1	A276-410	A276-304	A276-316		
12	Cover Bolt	4	A193-B7	A193-B8			
13	Gasket	1	SS304+Graphite			SS316+Graphite	
23	Nameplate	1	Aluminum				

CLASS 600 & 1500

BOLTED COVER

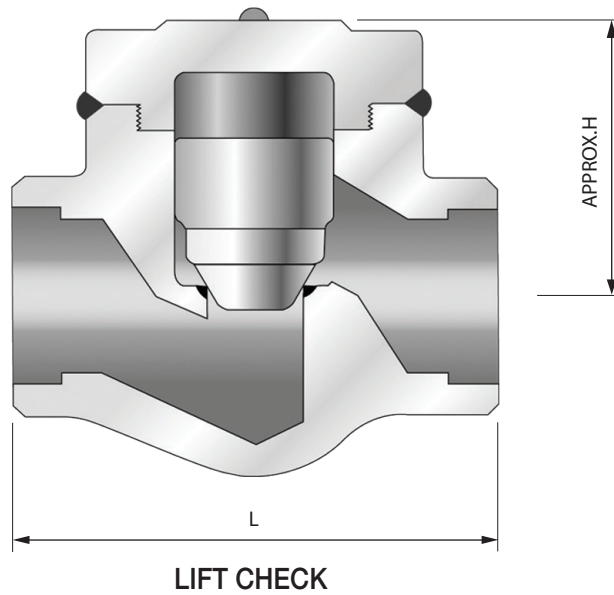


DIMENSIONS & WEIGHTS

CLASS	PORT	VALVE SIZE	CENTER TO TOP, OPEN	END TO END	PORT DIAMETER	WEIGHT
			H	L	d	
		DN	mm	mm	mm	kg
600 & 800	REDUCED	10	51	73	8	1.3
		15	51	73	11	1.2
		20	55	87	13	1.3
		25	65	96	19	2.1
		32	76	121	25	4.0
		40	84	141	28	4.7
		50	101	161	36	7.1
	FULL	10	51	73	10	1.3
		15	55	87	13	1.3
		20	65	96	19	2.1
		25	76	121	22	4.0
		32	84	141	28	4.7
		40	101	161	32	7.1
		50	116	220	42	10.7
1500	REDUCED	10	65	87	8	1.2
		15	65	96	11	1.2
		20	65	96	13	2.1
		25	76	121	19	4.0
		32	84	141	25	4.7
		40	101	161	28	7.1
		50	116	172	36	10.5

CLASS 1500 & 2500

WELDED COVER

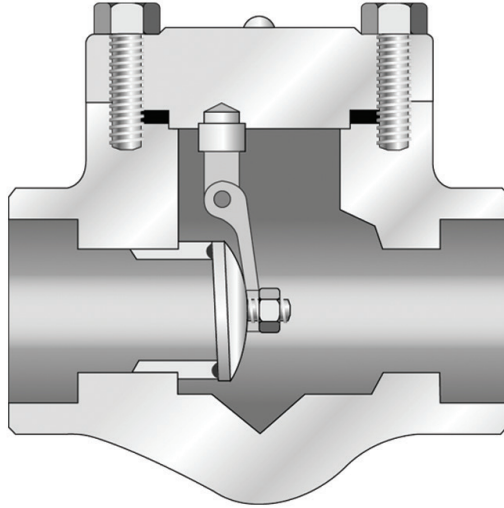


DIMENSIONS & WEIGHTS

CLASS	PORT	VALVE SIZE DN	CENTER TO TOP, OPEN	END TO END	PORT DIAMETER	WEIGHT kg
			H mm	L mm	d mm	
1500	FULL	15	65	96	13	2.1
		20	73	121	18	4.0
		25	80	141	22	4.7
		32	100	161	28	7.1
		40	110	172	32	10.7
		50	140	200	35	12.5
2500	FULL	15	73	121	11	7.1
		20	80	141	14	7.1
		25	100	161	19	7.1
		32	110	172	25	10.7
		40	140	200	28	10.7
		50	160	220	38	12.5

SWING CHECK VALVE

BOLTED COVER



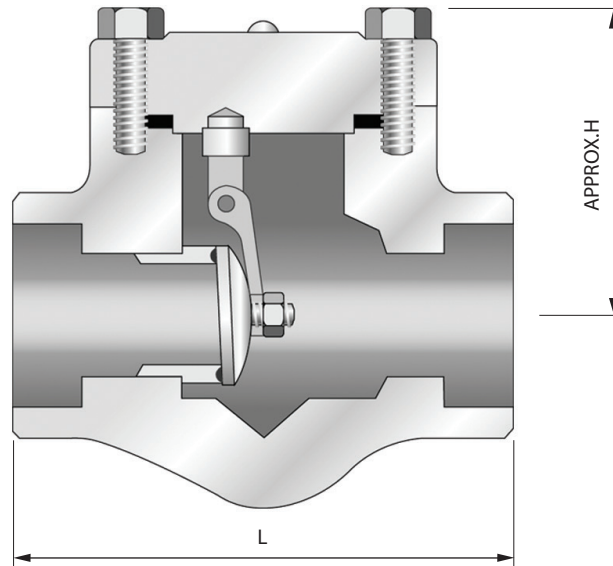
SWING CHECK

STANDARD MATERIAL SPECIFICATIONS

NO.	PART NAME	Q'TY	MATERIAL-ASTM				
			A105	F304	F304L	F316	F316L
1	Body	1	A105	A182-F304	A182-F304L	A182-F316	A182-F316L
3	Cover	1	A105	A182-F304	A182-F304L	A182-F316	A182-F316L
5	Disc	1	A276-410	A276-304		A276-316	
7	Seat Ring	1	A276-410	A276-304		A276-316	
8	Retaining Nut	1	A194-2H		A194-8		
9	Hinge	1				A351-CF8M	
10	Hinge Pin	1			A276-316		
11	Supporter	1				A276-316	
12	Cover Bolt	4	A193-B7		A193-B8		
13	Gasket	1		SS304+Graphite		SS316+Graphite	
23	Nameplate	1			Aluminum		

CLASS 800 & 1500

BOLTED COVER



SWING CHECK

DIMENSIONS & WEIGHTS

CLASS	PORT	VALVE SIZE DN	CENTER TO TOP, OPEN	END TO END	PORT DIAMETER	WEIGHT
			H mm	L mm	d mm	
800	REDUCED	10	51	73	10	1.1
		15	51	73	10	1.0
		20	55	87	13	1.4
		25	65	96	19	2.2
		32	76	121	25	4.0
		40	84	141	30	4.1
		50	101	161	37	6.0
	FULL	10	51	73	10	1.0
		15	55	87	13	1.4
		20	65	96	19	2.2
		25	76	121	25	4.0
		32	84	141	30	4.1
		40	101	161	37	6.0
		50	116	170	43	10.6
1500	REDUCED	10	65	87	10	1.4
		15	65	96	13	1.4
		20	65	96	13	2.2
		25	76	121	19	4.0
		32	84	141	25	4.1
		40	101	161	30	6.0
		50	116	172	37	9.3